

# 11-12 COPPER ROW

1,745 SQ FT

**COURAGE  
YARD**

SHAD THAMES

Discover this stunning office space in one of London's most iconic riverside locations. Situated within Courage Yard - just steps from Tower Bridge - this partially fitted, newly-refurbished CAT A office offers modern workspace with unbeatable views and immediate access to Shad Thames' vibrant lifestyle.

Perfect for ambitious businesses seeking an incredible workspace with excellent transport links, an inspiring riverside setting and a community of independent cafes, wellness studios and retail right on your doorstep.



Partially fitted  
refurbished CAT A office



Refurbished demised  
WCs & shower



Stunning views over Courage  
Yard onto Tower Bridge



New LVT timber & carpet  
flooring throughout



Fantastic local amenities  
on your doorstep



New HVAC



New kitchen



New LED Lighting



# 11-12 COPPER ROW

**COURAGE  
YARD**

SHAD THAMES

## WALKING TIMES



1 minute

Tower Bridge

1 minute

Potters Fields Park

7 minutes

Tower Hill

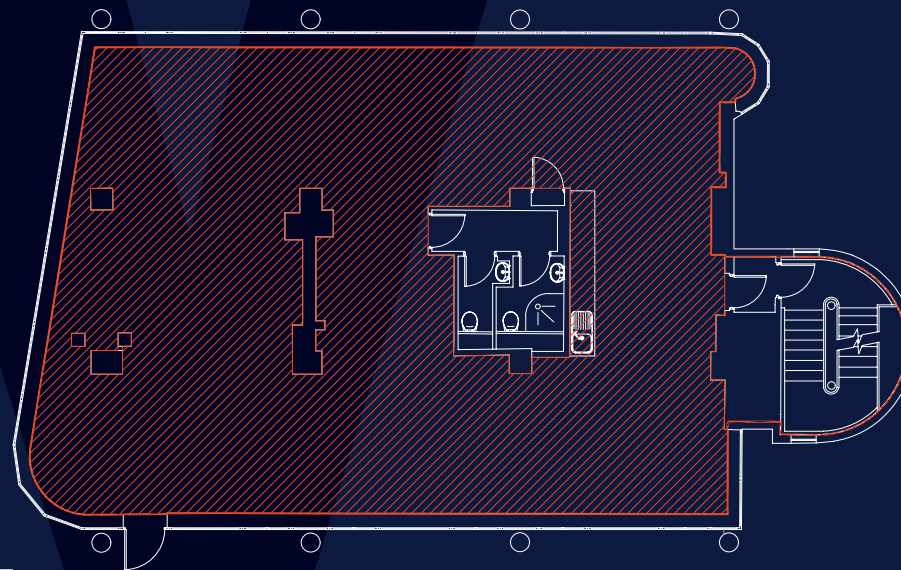
8 minutes

London Bridge Station

15 minutes

Borough Market

**1,745 SQ FT**



## CONTACT US



**BNP PARIBAS  
REAL ESTATE**

**Jack S. Saunders**

+44 (0) 7818 539 177

[jack.saunders@realestate.bnpparibas](mailto:jack.saunders@realestate.bnpparibas)

**Joseph Matthews**

+44 (0) 7818 251 801

[Joseph.Matthews@realestate.bnpparibas.co.uk](mailto:Joseph.Matthews@realestate.bnpparibas.co.uk)